



SmartSpan®

All the power of Iteris video detection for span-wire applications

Benefits of SmartSpan



Dynamic Zone Stabilization (DZS) algorithms for span wire applications



Accurate stop-bar and advanced detection and traffic data collection



Perfect for dual or single-tether span wires



Superior performance for the toughest environment

Many traffic management agencies using span-wire mounted signals have not previously been able to widely deploy video vehicle detection, as it has traditionally been mounted on rigid traffic signal mast arms. Until now, span-wire mounted cameras provided tough challenges for image processing algorithms, due to uncontrolled and random camera movement.

As the global leader in video vehicle detection, Iteris provides SmartSpan with Dynamic Zone Stabilization (DZS) algorithms. With DZS, camera movement is tracked and compensated to provide accurate stop-bar and advanced detection, as well as field proven Vantage® traffic data collection in a single solution.

Simple to install and set up

Both experienced and new users of video detection will find the installation and configuration of SmartSpan to be simple and quick. The system may be rack or shelf mounted inside a traffic cabinet, and is NEMA and Type I70/2070/ATC traffic controller compatible. The system has the capability to perform well in either isolated or networked intersections.

SmartSpan®

All the power of Iteris video detection for span-wire application

More Benefits

- For dual or single-tether span wires
- Stop-bar detection
- Non-intrusive to reduce installation and maintenance costs
- Simple and flexible installation and set up
- Full motion color video provides detection verification
- Compact, lightweight, and inconspicuous camera design
- Ideal for work zone and temporary intersection detection

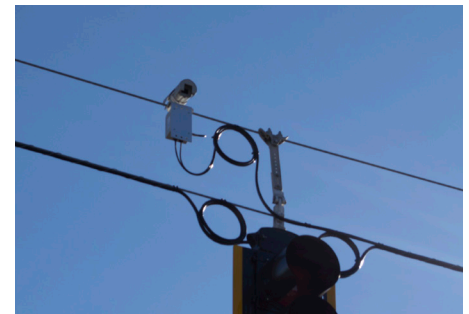
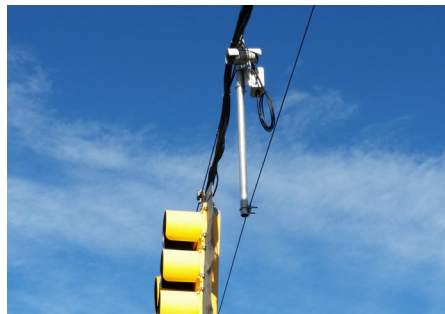
SPECIFICATIONS

Processor

Power	12 or 24 VDC, 7W maximum
Video Input	NTSC, PAL, 75 Ohm I Vpp
Communications	RS-232 serial port / USB
Detector Outputs/Inputs	4 / 4
Status Indicators	4 LEDs indicate output detection state
Mechanical	7" L x 4.5" H x 2.31" W / 0.8lb
Op. Temperature	-35°F to +165°F (-37°C to +74°C)
Humidity	0% to 95% non-condensing
Vibration	0.5G, 3 axes, 5-30Hz vibration tested
Regulatory	NEMA TS-2 compliant FCC part 15, Class A
Warranty	3 years limited warranty

Camera

Imager	768 x 494 effective pixels 530 TV lines minimum Automatic white balance >50 dB S/N ratio 1.0 to 10,000 lux
Lens	From 4.6° wide to 46.0° wide
Focus	Auto focus
Connections	Terminal block type connection
Mechanical	11" L x 11" D / 6.00 lbs
Op. Temperature	-3°F to +140°F (-35° C to +60° C)
Humidity	0% to 100%
Vibration	0.5G, 3 axes, 5-30 Hz
Shock	10G in all 3 axes for shock testing
Power	115VAC (5W typical, 10W max.) 50/60 Hz
Heater	Indium Tin Oxide, proportional power
Warranty	3 years limited warranty



Copyright © 2016 Iteris, Inc. All rights reserved.

NOTICE: Iteris, Inc. reserves the right to change product specifications without notice. Information furnished is for informational purposes only. This information may not be complete or the latest revision. For the most up-to-date information, please contact Iteris, Inc.



iteris®