



# TACTICS™

Central Advanced Traffic Management System

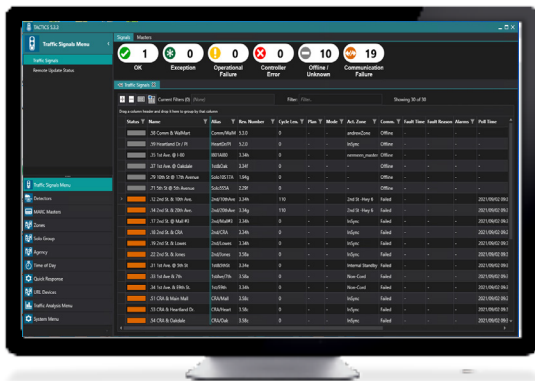
YUNEX  
TRAFFIC

# At a glance

TACTICS brings the latest technology for advanced traffic management for the smart cities of today and the future.

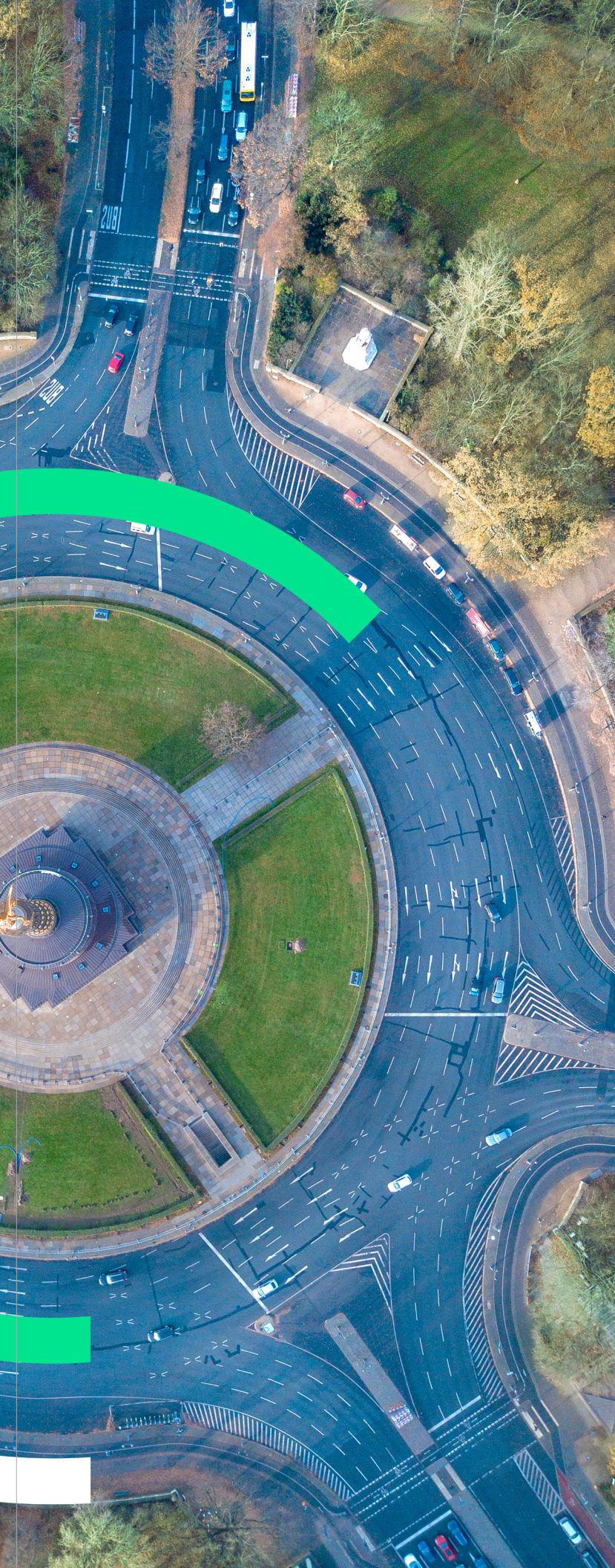
TACTICS provides a powerful, scalable, resilient and easy-to-use traffic management system complete with a modern interface that allows the user to:

- Manage on-street traffic equipment through a single user interface
- Simplify configuration download/upload powered by YAML technology
- Monitor the overall system status through a summary dashboard
- Configure devices remotely
- Download controller software to field devices remotely
- Analyze the data by running reports and creating diagrams
- Create strategies and quick responses to react to predefined events automatically
- Easily search and quickly filter information throughout the system
- Quickly manage intersections using a map view
- Logically group controllers independent of signal control grouping



Homepage





### Controller support with NTCIP support

*TACTICS* can be used to manage and monitor a range of controller software, including those running SEPAC and SEMARC. In addition, it supports NTCIP equipment to be connected and monitored, as well as having a simple ECOM-to-NTCIP converter that facilitates the migration processes.

### Flexible options to suit everyone

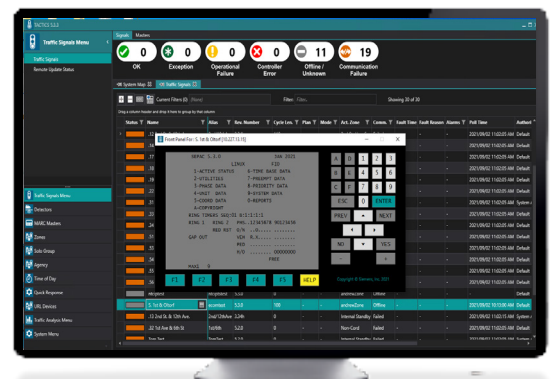
The solution is flexible, available with variants tailored to the needs of each traffic system. As it grows, *TACTICS* is also scalable, able to support complex functions and an increased number of field devices appropriately.

### Dashboards and traffic data reporting

With an intuitive, configurable graphical user interface, *TACTICS* provides summarized system dashboards, as well as detailed traffic intersection information that report on phase status, splits, termination reasons and other programmed data for easy monitoring. Other traffic analysis tools are also available to give insights to the user through intersection diagrams, as well as split monitoring and time-space diagrams.

### SEPAC front panel

*TACTICS* allows the user to view the front panel screen of a controller running SEPAC directly within *TACTICS*. A user can navigate to an intersection within *TACTICS* and select the "Front Panel" button which brings up a SEPAC front panel display. This SEPAC front panel display within *TACTICS* gives the user full and instant control over the controller allowing for immediate data changes.



SEPAC Front Panel

## Build resilience with automated traffic control via Quick Response

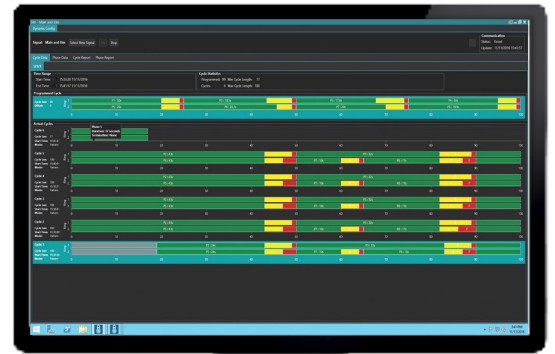
*TACTICS* offers support for the creation and management of triggers and actions for predefined events through the Quick Response module. These configurable responses add a level of automation to the system that can help in planned and unforeseen situations, increasing resilience and adding robustness when managing traffic.

## Installation made easy with a redesigned installer

The latest *TACTICS* has a completely redesigned installer with a simplified user interface that allows engineers to install and upgrade *TACTICS* onto servers, workstations and standalone systems quickly using a small number of button clicks. The installer also provides support for patch updates to be deployed without having to reinstall *TACTICS* every time, making it easy for new features and patches to be deployed as they become available.

## Seamless integration with Yunex Traffic SEPAC Controller Software

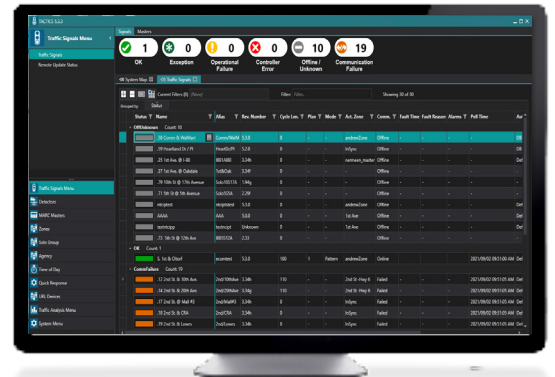
The system is backwards compatible with older versions of SEPAC and offers full support to the latest Yunex Traffic SEPAC 5 traffic controller software, allowing users to benefit from traffic control features that include system banks, import/export facilities for configuration data, and NTCIP compliance.



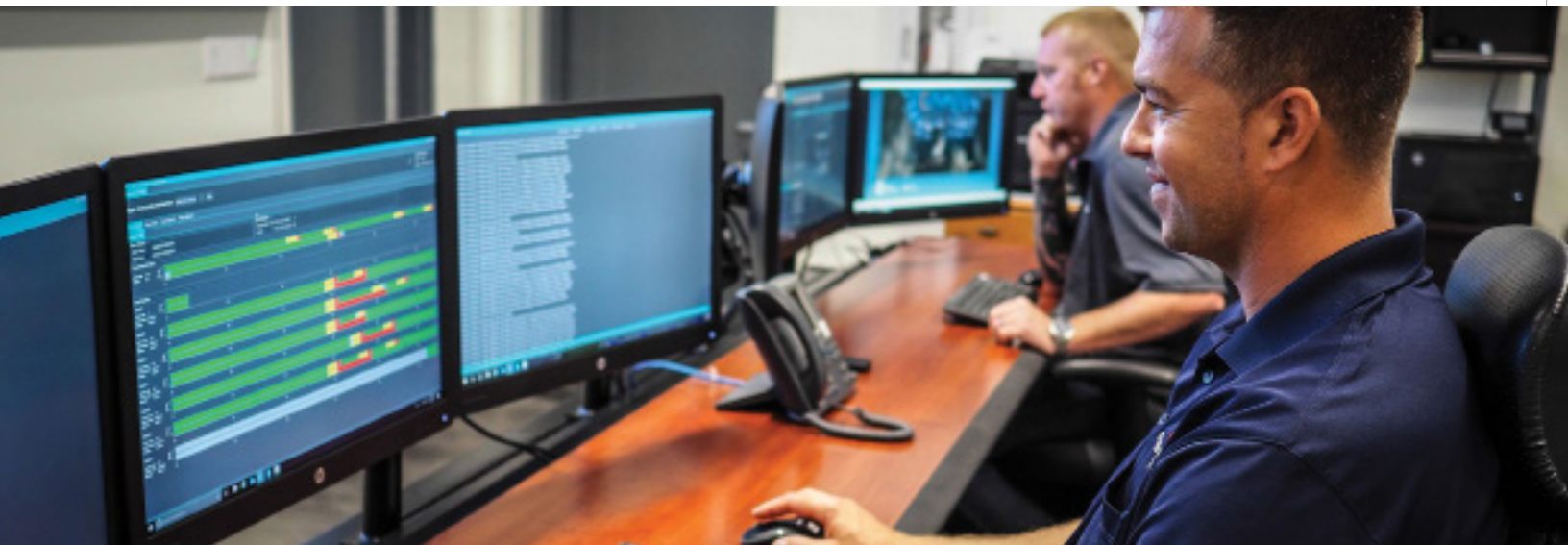
Split Monitor



Time Space



List Groups



1

#### TACTICS View

Designed for portable use, ideal for consultants and engineers who wish to manage intersection data and edit the controller database

2

#### TACTICS Marc

A closed-loop for field masters using SEMARC Controller Software that connects masters on the street for upload/downloads with simple analysis and map displays

3

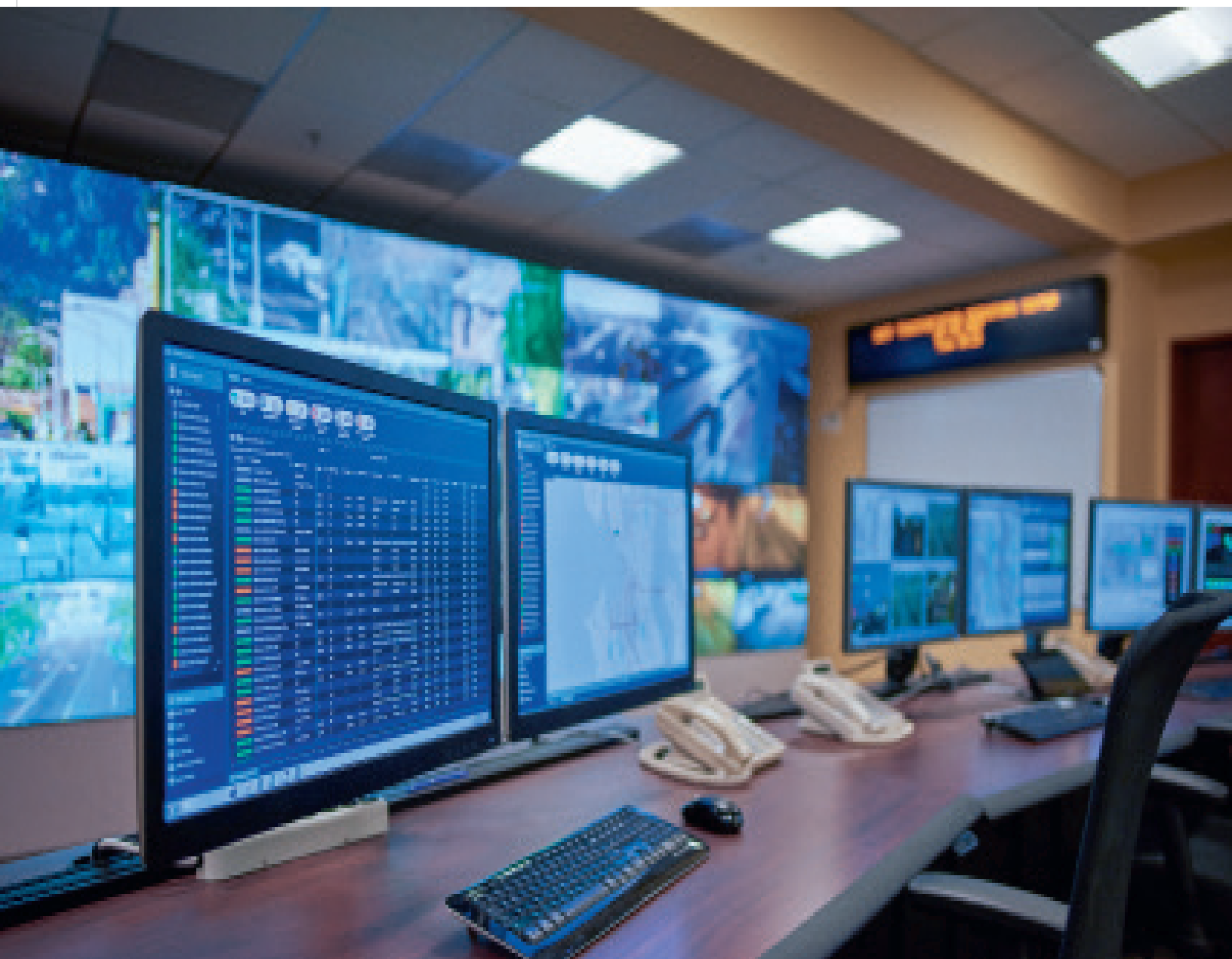
#### TACTICS Central

Full signal control and traffic management features ideal for smaller cities or areas with a limited number of intersections

4

#### TACTICS Enterprise

Full signal control and traffic management features plus advanced functionality such as quick response, perfect for larger volumes of traffic equipment



Features	TACTICS			
	View	Marc	Central	Enterprise
Password-protected access	✕	✕	✕	✕
Controller status	✕	✕	✕	✕
Controller database upload	✕	✕	✕	✕
Controller database download	✕	✕	✕	✕
Dial-up connection support	✕	✕	✕	✕
Serial connection support	✕	—	✕	✕
IP connection support	✕	✕	✕	✕
OSM-based map	✕	✕	✕	✕
Selectable themes	✕	✕	✕	✕
SEPAC ECOM Support	✕	✕	✕	✕
SEPAC NTCIP Support	✕	✕	✕	✕
Configurable logging	✕	✕	✕	✕
Communication server	—	✕	✕	✕
Multi-user controller access	—	✕	✕	✕
Permissions control	—	✕	✕	✕
Agency and jurisdictional permissions	—	✕	✕	✕
Dashboard	—	✕	✕	✕
Intersection Status	—	✕	✕	✕
System detector status	—	✕	✕	✕
Active alarm status	—	✕	✕	✕
Port server and client status	—	✕	✕	✕
List and compare database controller to central	—	✕	✕	✕
Parameter history and rollback	—	✕	✕	✕
MARC Master Support	—	✕	✕	✕
Standard and custom reports	—	✕	✕	✕
Synchro support	—	✕	✕	✕
System maps	—	✕	✕	✕
Custom map labels	—	✕	✕	✕
Traffic responsive	—	✕	✕	✕
Time of day	—	✕	✕	✕
Light Rail Transit support	—	✕	✕	✕
Laptop workstation	—	○	✕	✕
Zone/Group Broadcasts	—	○	✕	✕
Quick response	—	○	○	✕
Quick response status	—	○	○	✕
Time-space diagram	—	○	✕	✕
Split monitoring	—	○	✕	✕
Serial connection support (including Serial over IP)	—	—	✕	✕
Logical grouping of controllers independent of signal control	—	—	✕	✕
Scalability with multiple communication servers	—	—	✕	✕
Upload/download from a controller to another	—	—	✕	✕
Virtual ports for 3rd party applications	—	○	○	○
Second-per-second monitoring	—	—	○	○
Center-to-center	—	—	○	○

Where: ✕ Standard ○ Optional — Not available

# Let's shape the future of mobility together!

Yunex, LLC  
9225 Bee Cave Rd.  
Building B, Suite 201  
Austin, TX 78733  
[www.yunextraffic.com/us](http://www.yunextraffic.com/us)

Yunex Traffic is a global leader in the field of intelligent traffic systems, offering the widest end-to-end portfolio of solutions for adaptive traffic control and management, highway and tunnel automation, as well as smart solutions for V2X and road user charging tolling. Yunex Traffic has 3100 employees from 58 nations and is active in over 40 countries worldwide. Its intelligent mobility solutions are currently being used in major cities across the world, including Dubai, London, Berlin, Bogota, and Miami. Yunex Traffic has successfully concentrated its efforts on mastering technologies in the three segments of hardware, software, and service, and is subsequently the only supplier who is capable of meeting all major regional standards in Europe, UK, Asia and America. Further information is available at [www.yunextraffic.com/us](http://www.yunextraffic.com/us).