



Vantage Velocity[®]

Bluetooth or Wi-Fi based travel time calculation and performance measurement system

Benefits of the Vantage Velocity System



Immediate access to real-time speed and travel time information



Historical data for planning purposes



Simple installation



Fast, easy, accurate travel time capture

Vantage Velocity[®] takes advantage of the large number of vehicle that are driving with Bluetooth or Wi-Fi enabled devices such as smart phones. Each Velocity reader senses a devices unique "MAC" address as they pass a reader station and transmits the time and location of the device to a central host system. As devices are detected at successive Velocity readers, the Host System calculates average travel times and speeds for a roadway segment. The device specific network address of an individual is totally anonymous.

Simple to install and set up

Field installation is simple; the system can be easily rack or shelf mounted inside a traffic signal cabinet, or as a standalone unit. Various communication methods are available to transmit data to the Host system.

Vantage Velocity[®]

Bluetooth or Wi-Fi based travel time calculation and performance measurement system

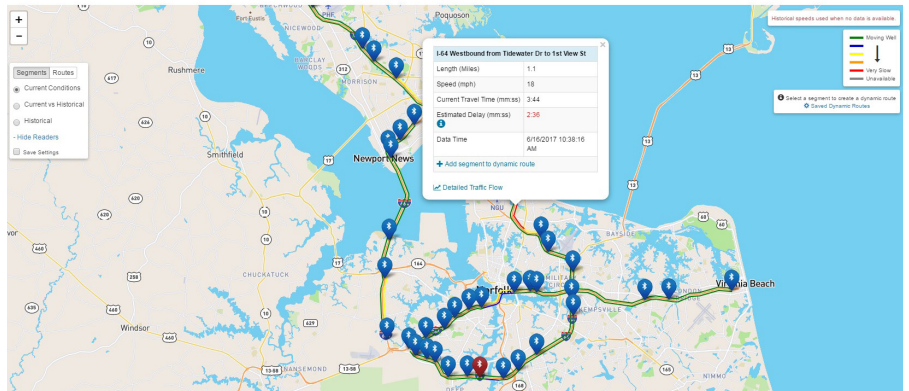
More Benefits

- Real-time data for traffic operations
- High accuracy, simple integration
- Agency owns all data
- Collect either bluetooth or Wi-Fi devices

SPECIFICATIONS

Field Unit

Processor	500MHz ARM9	Weight	1.0 lbs (0.45 kg)
Processing Method	Asynchronous multi-thread read	Bluetooth Antenna	Bluetooth 2.0+EDR Class I
Measured Item	Bluetooth MAC address in hexadecimal 00:00:00:00:00 format		Multiband Antenna (Cellular and Bluetooth integrated)
Timestamp	To nearest 1 second	Detectable Area	Up to 300 feet (100 meters)
Memory	128MB DDR-RAM	Approvals	FCC Class A
	512MB NAND Flash, high-speed (17MB/s)	Warranty	3 year limited warranty
	2 SD sockets (1 micro-SD, 1 full-size SD)		Manufactured in USA
I/O	2 SATA ports	Host Software Server Requirements	
	2 USB 2.0 480Mbps host/slave ports	MS Windows XP/7Pro	
	1 RS-232 Port	.NET Framework 3.5 or higher	
	Gigabit Ethernet, 10/100/1000 speeds	IIS 6.0 or 7.0	
Power Consumption	3.5 watts normal, 5.0 watts maximum	Internet connectivity required for congestion map functionality	
Supply Voltage	9-28 VDC	Wired or wireless Ethernet connectivity to field unit required	
Temperature	-34°C to +74°C		
MTBF	Greater than 100,000 hours		
Dimensions	5.25" x 4.5" x 2.5" (h*w*d)		



Copyright © 2017 Iteris, Inc. All rights reserved.

NOTICE: Iteris, Inc. reserves the right to change product specifications without notice. Information furnished is for informational purposes only. This information may not be complete or the latest revision. For the most up-to-date information, please contact Iteris, Inc.

