

Pedestal Poles

Pelco offers aluminum, iron, and plastic bases in various sizes as well as poles in aluminum and steel. Pelco's cast aluminum square base is FHWA certified and meets or exceeds AASHTO break-away requirements. Plastic replacement doors offer an economical way to deter vandalism.



1



1. Pedestal Pole, 4" Sch 40, Spun Alum No Threads

PB-5101 - Length - Coating

PNC=Process No Color
P__=Paint

2



2. Pedestal Pole, 4"- 8 NPT Sch 40, Spun Alum w/ Pelican ID

PB-5100 - Length - Coating

PNC=Process No Color
P__=Paint

Pedestal Pole, 4"- 8 NPT Sch 80, Spun Alum

PB-5102 - Length - Coating

PNC=Process No Color
P__=Paint

Pedestal Pole, 4"- 8 NPT Sch 40, Steel

PB-5201 - Length - Coating

P__=Paint

Pedestal Pole, 4"- 8 NPT Sch 40, Galv Steel

PB-5200 - Length - GLV - Coating

Blank=Galvanized Only
P__=Paint over Galvanized

3



3. Pedestal Pole, Welded, 4"- 8 NPT w/ 5-1/2" Nipple Length, Steel

PB-5219 - Length - Coating

GLV=Galvanized
P__=Paint

Note: 1. Standard poles are typically sold in 1 foot increments. For other lengths contact sales.
2. See Reference Section for available paint colors.



Square Pedestal Bases Aluminum

Pelco offers aluminum, iron, and plastic bases in various sizes as well as poles in aluminum and steel. Pelco's PB-5334 and PB-5335 cast aluminum square bases are FHWA certified and meets or exceeds AASHTO break-away requirements. Plastic replacement doors offer an economical way to deter vandalism.



Square Base Assembly, Alum w/ Alum Door



PB-5334	-	<input type="checkbox"/>	-	<input type="checkbox"/>	-	<input type="checkbox"/>	-	<input type="checkbox"/>
		Door		Set Screws in Collar		Grounding Lug		Coating
		NL=No Logo Blank=Pelco Logo		1S=1 Hex Bolt 3S=3 Set Screws Blank=None		GL=Ground Lug Blank=None		PNC=Process No Color P__=Paint

Square Base Assembly, Alum w/ Plastic Door

PB-5335	-	<input type="checkbox"/>	-	<input type="checkbox"/>	-	<input type="checkbox"/>	-	PNC
		Door		Set Screws in Collar		Grounding Lug		
		NL=No Logo Blank=Pelco Logo		1S=1 Hex Bolt 3S=3 Set Screws Blank=None		GL=Ground Lug Blank=None		

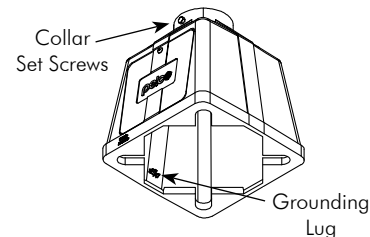
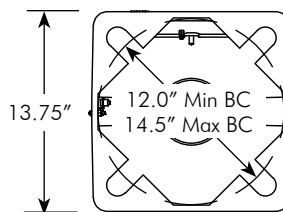
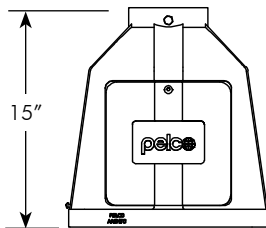
Square Base Assembly, Alum Heat Treated w/ Alum Door



PB-5336	-	<input type="checkbox"/>	-	<input type="checkbox"/>	-	<input type="checkbox"/>	-	<input type="checkbox"/>
		Door		Set Screws in Collar		Grounding Lug		Coating
		NL=No Logo Blank=Pelco Logo		1S=1 Hex Bolt 3S=3 Set Screws Blank=None		GL=Ground Lug Blank=None		PNC=Process No Color P__=Paint

Square Base Assembly, Alum Heat Treated w/ Plastic Door

PB-5337	-	<input type="checkbox"/>	-	<input type="checkbox"/>	-	<input type="checkbox"/>	-	PNC
		Door		Set Screws in Collar		Grounding Lug		
		NL=No Logo Blank=Pelco Logo		1S=1 Hex Bolt 3S=3 Set Screws Blank=None		GL=Ground Lug Blank=None		



- Note: 1. PB-5334 and PB-5335 aluminum square bases above are available with AASHTO certifications and FHWA approval.
2. All assemblies are supplied standard with stainless fasteners.
3. See Reference Section for available paint colors.

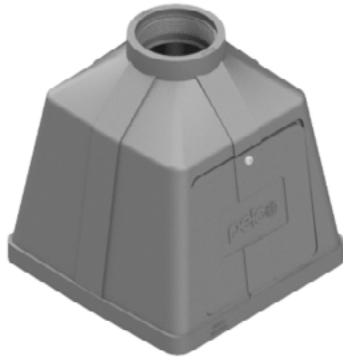


Square Pedestal Bases Aluminum

Pelco offers aluminum, iron, and plastic bases in various sizes as well as poles in aluminum and steel. Pelco's PB-5334 and PB-5335 cast aluminum square bases are FHWA certified and meets or exceeds AASHTO break-away requirements. Plastic replacement doors offer an economical way to deter vandalism.



Square Base Assembly, Alum Steel Coupling w/ Alum Door



PB-5340	-	Door	-	Set Screws in Collar	-	Grounding Lug	-	Coating
		<input type="checkbox"/>		<input type="checkbox"/>		<input type="checkbox"/>		<input type="checkbox"/>
		NL=No Logo Blank=Pelco Logo		1S=1 Hex Bolt 3S=3 Set Screws Blank=None		GL=Ground Lug Blank=None		PNC=Process No Color P__=Paint

Square Base Assembly, Alum Steel Coupling w/ Plastic Door

PB-5341	-	Door	-	Set Screws in Collar	-	Grounding Lug	-	PNC
		<input type="checkbox"/>		<input type="checkbox"/>		<input type="checkbox"/>		
		NL=No Logo Blank=Pelco Logo		1S=1 Hex Bolt 3S=3 Set Screws Blank=None		GL=Ground Lug Blank=None		

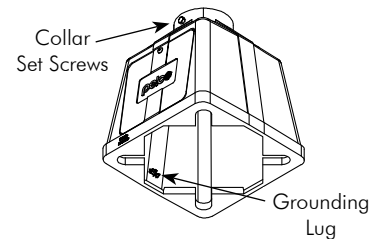
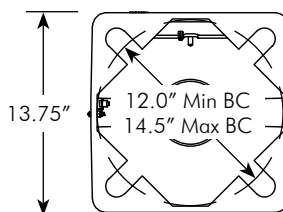
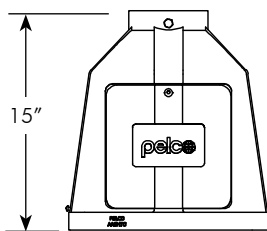
Square Base Assembly, Alum Slip Fit w/ Alum Door



PB-5338	-	Door	-	Grounding Lug	-	Coating
		<input type="checkbox"/>		<input type="checkbox"/>		<input type="checkbox"/>
		NL=No Logo Blank=Pelco Logo		GL=Ground Lug Blank=None		PNC=Process No Color P__=Paint

Square Base Assembly, Alum Slip Fit w/ Plastic Door

PB-5339	-	Door	-	Grounding Lug	-	PNC
		<input type="checkbox"/>		<input type="checkbox"/>		
		NL=No Logo Blank=Pelco Logo		GL=Ground Lug Blank=None		



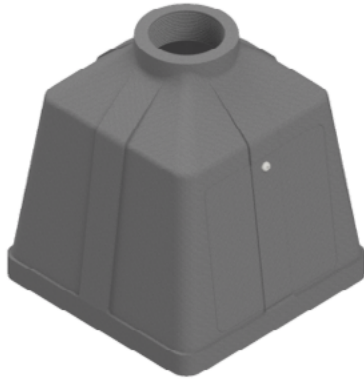
Note: 1. All assemblies are supplied standard with stainless fasteners.
2. See Reference Section for available paint colors.



Square Pedestal Bases

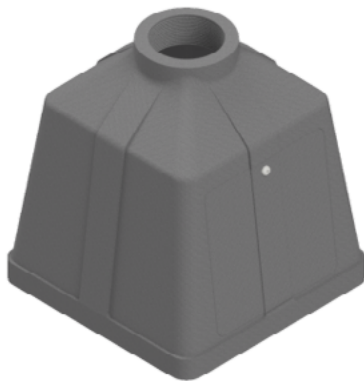
Iron

Pelco offers aluminum, iron, and plastic bases in various sizes as well as poles in aluminum and steel. Pelco's PB-5334 and PB-5335 cast aluminum square bases are FHWA certified and meets or exceeds AASHTO break-away requirements. Plastic replacement doors offer an economical way to deter vandalism.



Square Base Assembly, Iron w/ Iron Door

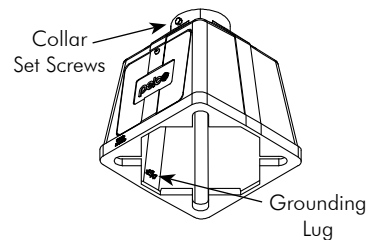
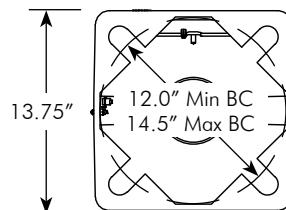
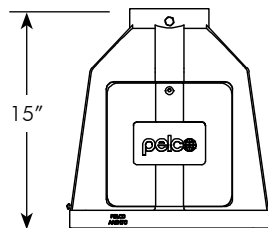
PB-5308	-	<input type="checkbox"/>	-	<input type="checkbox"/>	-	<input type="checkbox"/>
		Set Screws in Collar		Grounding Lug		Coating
		1S=1 Hex Bolt 3S=3 Set Screws Blank=None		GL=Grounding Lug Blank=None		GLV=Galvanized P_=_Paint



Square Base Assembly, Iron w/ Iron Door

PB-5511	-	<input type="checkbox"/>	-	<input type="checkbox"/>	-	<input type="checkbox"/>
		Set Screws in Collar		Grounding Lug		Coating
		1S=1 Hex Bolt 3S=3 Set Screws Blank=None		GL=Grounding Lug Blank=None		GLV=Galvanized P_=_Paint

Note:
"Buy American" Certification available upon request at time of order.

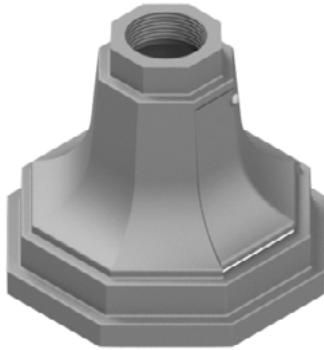


Note: 1. All assemblies are supplied standard with stainless fasteners.
2. See Reference Section for available paint colors.



Octagonal Pedestal Bases Aluminum

Pelco offers aluminum, iron, and plastic bases in various sizes as well as poles in aluminum and steel. Pelco's PB-5334 and PB-5335 cast aluminum square bases are FHWA certified and meets or exceeds AASHTO break-away requirements. Plastic replacement doors offer an economical way to deter vandalism.



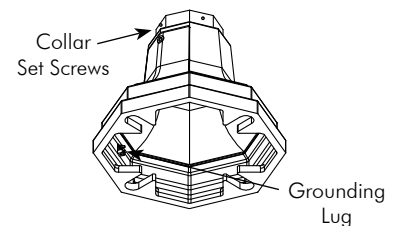
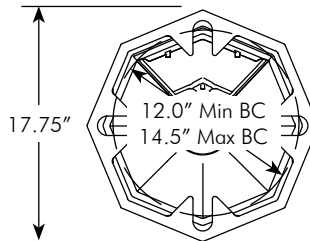
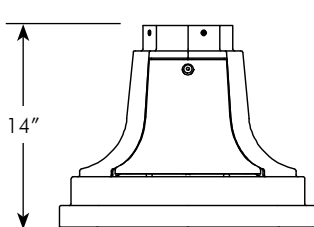
Octagonal Base Assembly, Alum w/ Alum Door

	Set Screws in Collar		Grounding Lug		Coating	
PB-5349	-	<input type="checkbox"/>	-	<input type="checkbox"/>	-	<input type="checkbox"/>
	1S=1 Hex Bolt 4S=4 Set Screws Blank=None		GL=Grounding Lug Blank=None		PNC=Process No Color P__=Paint	

Octagonal Base Assembly, Alum Slip Fit w/ Alum Door



	Grounding Lug		Coating	
PB-5350	-	<input type="checkbox"/>	-	<input type="checkbox"/>
	GL=Grounding Lug Blank=None		PNC=Process No Color P__=Paint	

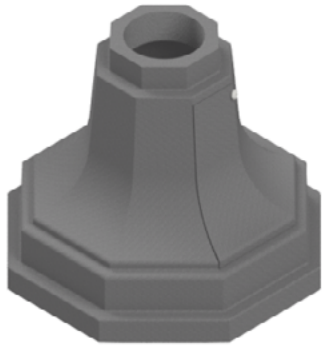


Note: 1. All assemblies are supplied standard with stainless fasteners.
2. See Reference Section for available paint colors.



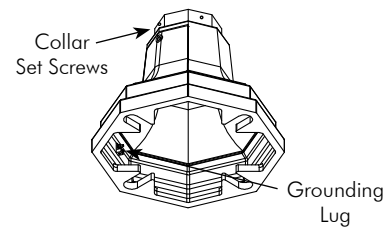
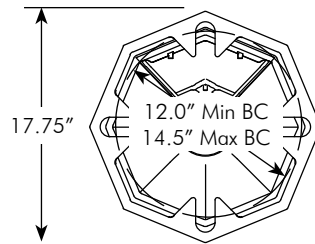
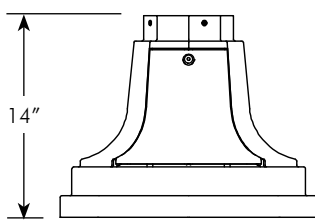
Octagonal Pedestal Bases Iron

Pelco offers aluminum, iron, and plastic bases in various sizes as well as poles in aluminum and steel. Pelco's PB-5334 and PB-5335 cast aluminum square bases are FHWA certified and meets or exceeds AASHTO break-away requirements. Plastic replacement doors offer an economical way to deter vandalism.



Octagonal Base Assembly, Iron w/ Iron Door

	Set Screws in Collar	Grounding Lug	Coating
PB-5310	- [] -	[] -	[]
	1S=1 Hex Bolt 4S=4 Set Screws Blank=None	GL=Grounding Lug Blank=None	GLV=Galvanized P__=Paint

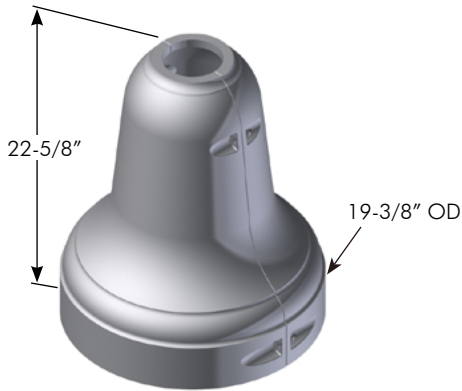


Note: 1. All assemblies are supplied standard with stainless fasteners.
2. See Reference Section for available paint colors.



Pedestal Bases

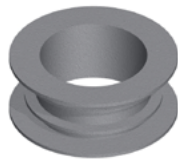
Pelco offers aluminum, iron, and plastic bases in various sizes as well as poles in aluminum and steel. Pelco's PB-5334 and PB-5335 cast aluminum square bases are FHWA certified and meets or exceeds AASHTO break-away requirements. Plastic replacement doors offer an economical way to deter vandalism.



2-Piece Base for 4-1/2" OD Pole, Plastic

PB-5303-PNC

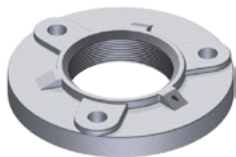
Note:
High Density Crosslinkable Polyethylene Pedestal Pole Base.
Complete with all hardware. No anchor bolts required.



2-Piece Reducer, Alum

PB-5328-PNC

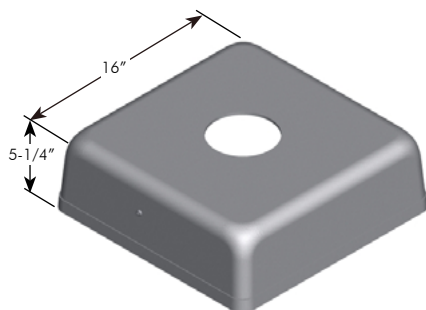
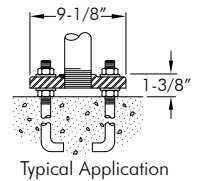
Note:
2-Piece Aluminum Reducer for PB-5303-PNC Base. (Reduces 4-1/2" OD to 3-1/2" OD)



Flange Base, 4"-8NPT, Galv Iron

PB-5304-GLV

Note:
Three 13/16" mounting holes on 7-1/4" bolt circle.



2-Piece Square Cover, Alum

PB-5399 - Pole Diameter - Coating

4.5=4.5" OD	-	PNC=Process No Color
8=8" OD	-	P__=Paint

Note:
For 4-1/2" - 8" OD Pole (15" Max. Bottom Opening). Complete with all hardware.

Note: 1. All assemblies are supplied standard with stainless fasteners.
2. See Reference Section for available paint colors.



Pole & Arm Caps

Pelco offers pole and arm caps in various sizes in both aluminum and steel. Caps for 4-1/2" OD posts are available in aluminum and ABS plastic.

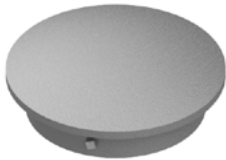


Pole Cap, Acorn Type, Alum



Diameter Range:	Part No:
3"	PB-5403 - <input type="text"/> <small>Coating</small>
3-1/2"	PB-5407 - <input type="text"/>
4-1/2"	PB-5401 - <input type="text"/>

PNC=Process No Color
P_ =Paint



Pole Cap, Dome Type, Alum, 4-1/2" OD Pole

PB-5402 - Coating

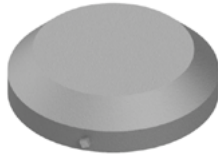
PNC=Process No Color
P_ =Paint

Note: 1. All assemblies are supplied standard with stainless fasteners.
2. See Reference Section for available paint colors.



Pole & Arm Caps

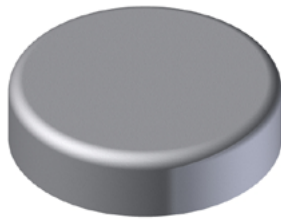
Pelco offers pole and arm caps in various sizes in both aluminum and steel. Caps for 4-1/2" OD posts are available in aluminum and ABS plastic.



Pole & Arm Cap, Alum

Diameter Range:	Part No:
2-5/16" to 3-1/2"	AP-0101 - <input type="text"/> <small>Coating</small>
3" to 4"	AP-0102 - <input type="text"/>
4-3/16" to 5-3/16"	AP-0103 - <input type="text"/>
5-3/16" to 6-3/16"	AP-0104 - <input type="text"/>
6-1/8" to 7-1/8"	AP-0105 - <input type="text"/>
7-3/16" to 8-1/4"	AP-0106 - <input type="text"/>
8-3/16" to 9-3/16"	AP-0107 - <input type="text"/>
9-7/16" to 10-7/16"	AP-0108 - <input type="text"/>

PNC=Process No Color
P__=Paint



Pole & Arm Cap, Alum

Diameter Range:	Part No:
10-11/16" to 11-11/16"	AP-0109 - <input type="text"/> <small>Coating</small>
11-7/8" to 12-11/16"	AP-0110 - <input type="text"/>

PNC=Process No Color
P__=Paint

Note: 1. All assemblies are supplied standard with stainless fasteners.
2. See Reference Section for available paint colors.

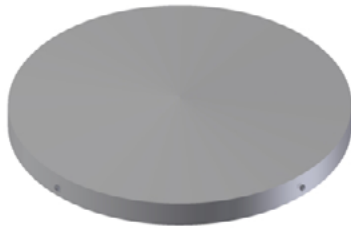


Pole & Arm Caps

Pelco offers pole and arm caps in various sizes in both aluminum and steel. Caps for 4-1/2" OD posts are available in aluminum and ABS plastic.



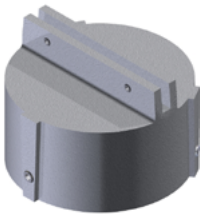
Pole Cap, Steel



AP-0450 - -
Pole Diameter See Table Coating P__=Paint

Pole Dia.	Diameter Range
13.25	12.57"-13.38" OD
14.25	13.39"-14.38" OD
15.25	14.39"-15.38" OD
16.25	15.39"-16.38" OD
17.25	16.39"-17.38" OD
18.25	17.39"-18.38" OD
19.25	18.39"-19.38" OD
20.25	19.39"-20.38" OD
21.25	20.39"-21.38" OD
22.25	21.39"-22.38" OD
23.25	22.39"-23.38" OD
24.25	23.39"-24.38" OD

Post Cap for Sign Blade, Alum



Diameter Range:	Sign Blade	Part No:
4-1/2" OD	Extruded	SH-1608 - <input type="text"/> <small>Coating</small>
4-1/2" OD	Flat	SH-1615 - <input type="text"/>

PNC=Process No Color
P__=Paint

Pole Cap, ABS Plastic



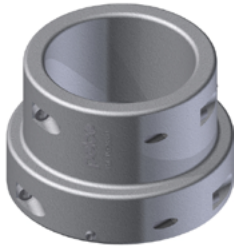
Diameter Range:	Part No:
Up to 4" OD	AP-0805-PNC
Up to 5" OD	AP-0806-PNC

- Note: 1. All assemblies are supplied standard with stainless fasteners.
2. Specify options when ordering.
3. See Reference Section for available paint colors.



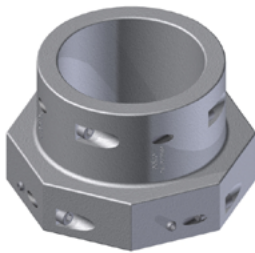
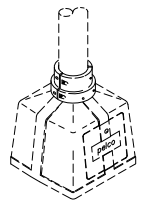
Collars & Adapters

Pole and base collar assemblies, for both square and octagonal bases, are available in highwind areas to add strength and help prevent loosening of connection.



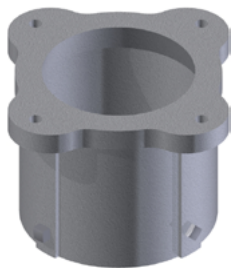
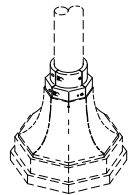
Pole & Base Collar Assembly, Alum Square Base

PB-5325 - Coating
 PNC=Process No Color
 P__=Paint



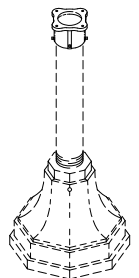
Pole & Base Collar Assembly, Alum Octagonal Base

PB-5326 - Coating
 PNC=Process No Color
 P__=Paint



Pedestal Adapter, 4" (4-1/2" OD Pole), Alum 6-1/2" Bolt Circle

SE-3104 - Coating
 PNC=Process No Color
 P__=Paint

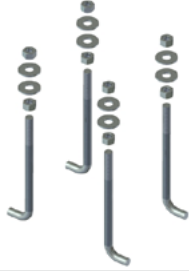


Note: 1. All assemblies are supplied standard with stainless steel fasteners.
 2. Specify options when ordering.
 3. See Reference Section for available paint colors.



Anchor Bolt Sets

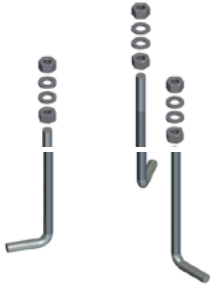
Pelco's galvanized anchor bolt sets are available in a variety of sizes.



Anchor Bolt Set of 4 w/ Hardware 1/2"-13NC x 7-1/2", Galv

AP-1046-GLV

Note: Includes 4 Bolts, 8 Washers, and 8 Nuts.



Anchor Bolt Set of 3 w/Hardware 3/4"-10NC x 18", Galv

PB-5305-GLV

Note: Includes 3 Bolts, 6 Washers and 6 Nuts.



Anchor Bolt Set of 4 w/ Hardware 3/4"-10NC x 18", Galv

PB-5306-GLV

Note: Includes 4 each: Bolts, Washers and Nuts.

PB-5518-GLV

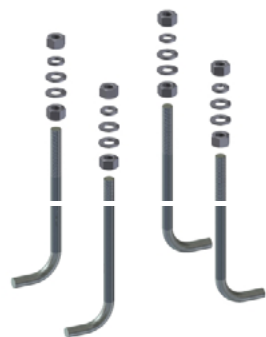
Note: Includes 4 Bolts, 8 Washers and 8 Nuts.



Anchor Bolt Set of 4 w/ Plate Washers 3/4"-10NC x 18", Galv

PB-5371-GLV

Includes 4 Bolts, 4 Plate Washers, 4 Washers, and 4 Nuts.



Anchor Bolt Set of 4 w/ Hardware 1"-8NC x 36", Galv

AP-1007-  -GLV

Template

- 1=12" Bolt Circle
- 2=12.75" Bolt Circle
- 3=11" Bolt Circle

Includes 4 Bolts, 4 Lock Washers, 8 Washers, and 8 Nuts.

Note: 1. All assemblies are supplied standard with galvanized fasteners.



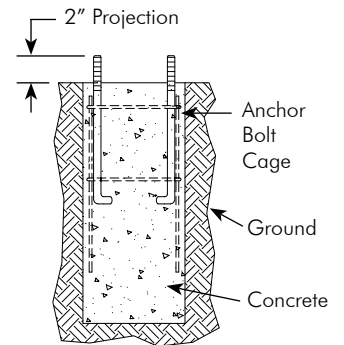
Anchor Bolt Cages

Anchor bolt cages allow the critical bolt circle dimensions to be maintained when the steel is cast into the concrete. These cages may be used instead of anchor bolt sets.



Anchor Bolt Cage, Galv
1/2"-13NC x 7-1/2" w/ 36" Rebar
5-1/2" Bolt Circle

AP-1049-GLV

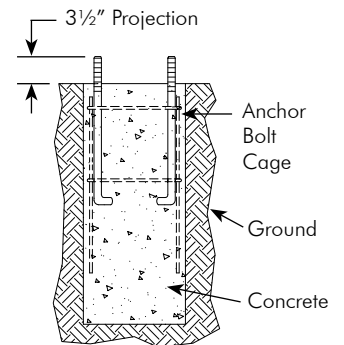


Typical Footing Detail



Anchor Bolt Cage, Galv
3/4"-10NC x 18" w/ 36" Rebar
8-1/2" Bolt Circle

AP-1089-GLV

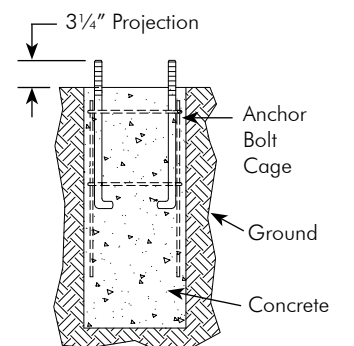


Typical Footing Detail



Anchor Bolt Cage, Galv
3/4"-10NC x 18" w/ 36" Rebar
13" Bolt Circle

AP-1095-GLV



Typical Footing Detail

Note: 1. All assemblies are supplied standard with galvanized fasteners.
 2. Footing shall be determined by end user.



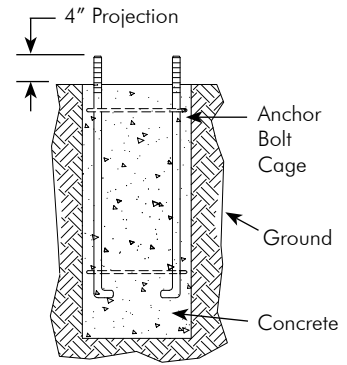
Anchor Bolt Cages

Anchor bolt cages allow the critical bolt circle dimensions to be maintained when the steel is cast into the concrete. These cages may be used instead of anchor bolt sets.



Anchor Bolt Cage, Galv
1"-8NC x 36"
15" Bolt Circle

AP-3136-GLV

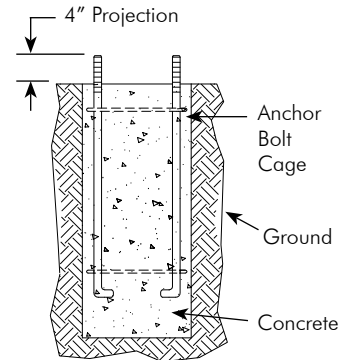


Typical Footing Detail



Anchor Bolt Cage, Galv
1"-8NC x 36"
11" Bolt Circle,

AP-3129-GLV



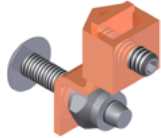
Typical Footing Detail

Note: 1. All assemblies are supplied standard with galvanized fasteners.
2. Footing shall be determined by end user.

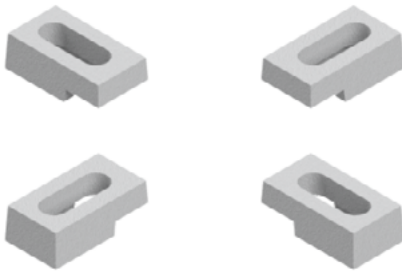
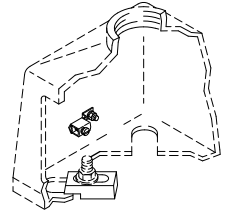


Pole & Base Accessories

Pelco offers various accessories for pedestal bases from grounding lugs to plastic hand hole covers.

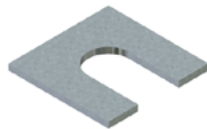
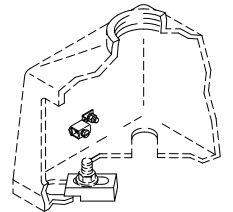


PB-5323-PNC **Grounding Lug w/ Mounting Hardware**



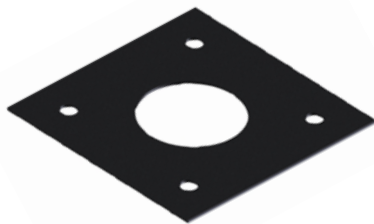
PB-5446-PNC **Anchor Bolt Adapter, Set of 4, Alum**

← PB-0532 Adapter



PB-0602-GLV **Shim, 1/16" x 2" x 2", Steel, Galv**

PB-0603-GLV **Shim, 1/8" x 2" x 2", Steel, Galv**



PB-0550-PNC **Template, ABS Plastic 13" Bolt Circle for Square and Octagonal Bases**



PB-5356-PNC **Universal Hand Hole Cover, ABS Plastic fits 2-3/4" x 4-1/2" to 5" x 8"**

Note: 1. All assemblies are supplied standard with stainless steel fasteners.
 2. Specify options when ordering.




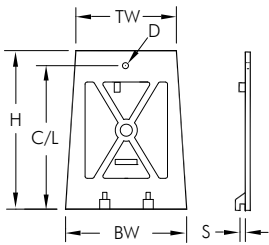
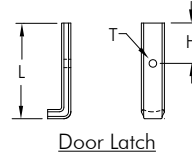
Plastic Replacement Doors

Plastic replacement doors for lighting pole bases are fabricated from tough hi-density UV inhibited plastic which offers excellent impact resistance. They give the appearance of aluminum, never needing painted and are a significant deterrent to vandalism since they have no scrap value. Pelco's doors withstand temperature extremes of -78° to +150° fahrenheit.

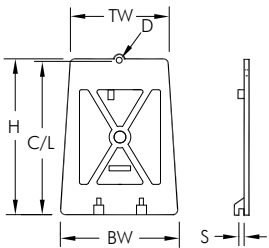


Transformer Door, Plastic

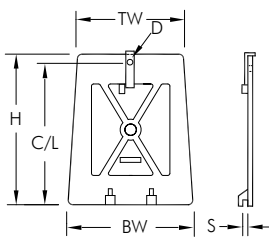
Base
Manufacturer
PB-0522 -  - PNC
*See Chart



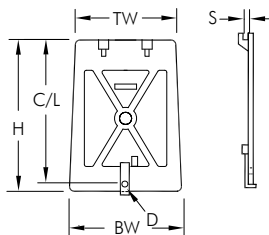
*BASE MFG	DESCRIPTION	S	C/L	H	DOOR SIZE		HOLE D	LATCH		
					TW	BW		L	H	T
03	Valmont, Flat	5/16"	12-5/8"	13-3/4"	7-15/16"	9-1/4"	3/8"	N/A	N/A	N/A
04	Union Metal, Flat	5/16"	13-5/16"	13-15/16"	7-59/64"	9-1/4"	3/8"	N/A	N/A	N/A



*BASE MFG	DESCRIPTION	S	C/L	H	DOOR SIZE		HOLE D	LATCH		
					TW	BW		L	H	T
05-06	Valmont-Akron, Flat (TB-1AF, TB-2AF, TB-3AF)	1/4"	13-1/2"	13-1/4"	9-1/8"	9-1/2"	3/8"	N/A	N/A	N/A
07	A.B. Chance, Flat	3/8"	13-5/16"	13-7/8"	9-1/16"	9-13/16"	3/8"	N/A	N/A	N/A
12	Hapco, Flat (56631, 56632)	5/16"	13-5/8"	13-7/16"	9-1/8"	9-5/8"	3/8"	N/A	N/A	N/A
19	P & K, C-98612, Flat (M-81)	3/8"	16-21/32"	16-1/2"	10-1/2"	13-1/2"	11/32"	N/A	N/A	N/A



*BASE MFG	DESCRIPTION	S	C/L	H	DOOR SIZE		HOLE D	LATCH		
					TW	BW		L	H	T
01	Kaiser, Curved w/ Latch	3/8"	13-3/4"	14-7/8"	10-5/8"	11-3/4"	11/32"	4-5/8"	1-3/4"	5/16"-18
08	P & K, Flat w/ Latch (TB2A, TB2C, TB5C)	1/4"	11-7/8"	13-1/4"	8-1/4"	9-15/16"	11/32"	3-1/4"	1-3/4"	5/16"-18
15	Akron, Flat w/ Latch (TB-20S)	1/4"	12"	13-3/8"	9-1/8"	9-5/8"	5/16"	3-3/8"	1-7/8"	1/4"- 20
16	Akron, Flat Short w/ Latch (TB-17S)	5/16"	11-1/8"	11-23/32"	9-1/8"	9-5/8"	5/16"	2-3/8"	1-1/8"	1/4"- 20
22	Akron, Curved w/ Latch (FP-5190)	3/8"	12"	13-5/16"	8-1/2"	9-1/2"	11/32"	3-1/4"	1-3/4"	5/16"-18



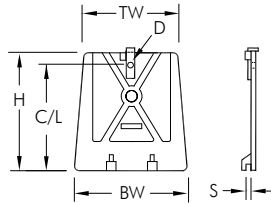
*BASE MFG	DESCRIPTION	S	C/L	H	DOOR SIZE		HOLE D	LATCH		
					W	BW		L	H	T
10	P & K, Flat w/ Latch (REVERSED OPENING TB-1, TB-2)	9/16"	12"	13-3/8"	8-3/8"	9-5/8"	11/32"	3-1/4"	1-3/4"	5/16"-18

- Note: 1. All assemblies are supplied standard with stainless fasteners.
 2. Doors w/latches include latch & vandal-resistant screw. Doors without latches are shipped without hardware.
 3. Specify options when ordering.

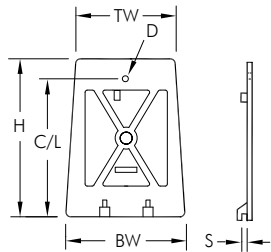


Plastic Replacement Doors

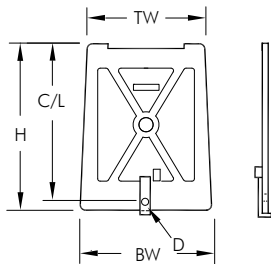
Plastic replacement doors for lighting pole bases are fabricated from tough hi-density UV inhibited plastic which offers excellent impact resistance. They give the appearance of aluminum, never needing painted and are a significant deterrent to vandalism since they have no scrap value. Pelco's doors withstand temperature extremes of -78° to +150° fahrenheit.



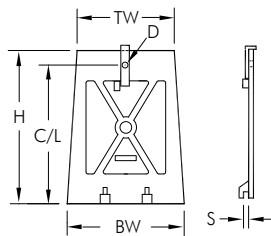
*BASE MFG	DESCRIPTION	S	C/L	H	DOOR SIZE		HOLE D	LATCH		
					W	BW		L	H	T
11	P & K, Flat Short w/ Latch (TB-4)	5/16"	9-13/16"	11-1/8"	9-9/16"	11-5/8"	11/32"	3-1/4"	1-3/4"	5/16"-18



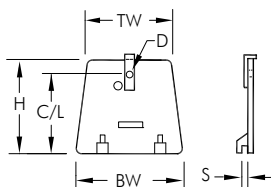
*BASE MFG	DESCRIPTION	S	C/L	H	DOOR SIZE		HOLE D	LATCH		
					TW	BW		L	H	T
13	Valmont, Flat	5/16"	12-15/16"	13-7/8"	7-15/16"	9-1/4"	3/8"	N/A	N/A	N/A
25	FAB, Flat	5/16"	12-7/8"	13-5/8"	8-1/2"	9-3/4"	5/16"	N/A	N/A	N/A



*BASE MFG	DESCRIPTION	S	C/L	H	DOOR SIZE		HOLE D	LATCH		
					W	BW		L	H	T
18	Akron, Flat, Hinged w/ Latch (REVERSE OPENING TB-17H)	N/A	10-3/16"	11-5/8"	9-1/8"	9-11/16"	5/16"	3-3/8"	1-7/8"	1/4"-20



*BASE MFG	DESCRIPTION	S	C/L	H	DOOR SIZE		HOLE D	LATCH		
					W	BW		L	H	T
24	Union Metal, Flat w/ Latch	5/16"	3-5/16"	13-3/4"	7-59/64"	9-1/4"	13/32"	3-3/8"	11/16"	3/8"-16



*BASE MFG	DESCRIPTION	S	C/L	H	DOOR SIZE		HOLE D	LATCH		
					W	BW		L	H	T
14	P & K, Curved, Small w/ Latch (HBS-6)	7/32"	4-1/2"	5-1/4"	5-3/16"	6"	9/32"	2-3/8"	1-1/8"	1/4"-20

- Note: 1. All assemblies are supplied standard with stainless fasteners.
 2. Doors w/latches include latch & vandal-resistant screw. Doors without latches are shipped without hardware.
 3. Specify options when ordering.

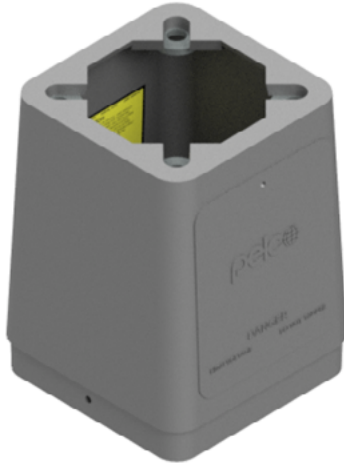


Transformer Bases

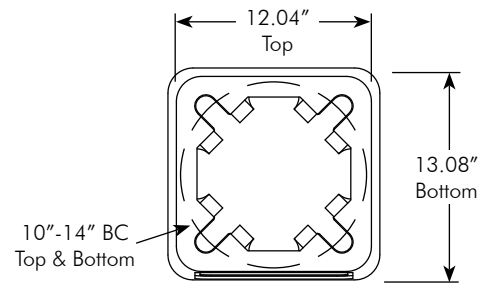
Pelco's Transformer bases stand 17" tall and comes complete with an aluminum Pelco door and 8 heavy duty galvanized steel washers. A transformer base hardware kit is optional.



Transformer Base , TB2-17, Alum w/ Pelco Door & Galvanized Washers



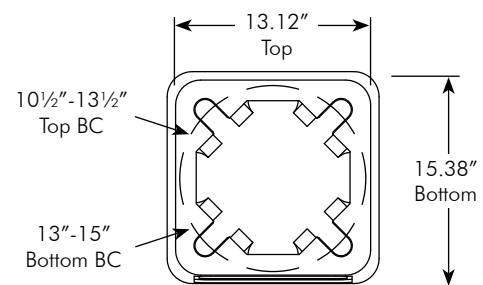
PB-5514 - -
 Hardware Kit Coating
 Blank=None PNC=Process No Color
 HK=Hardware Kit P__=Paint



Transformer Base , TB1-17, Alum w/ Pelco Door & Galvanized Washers



PB-5517 - -
 Hardware Kit Coating
 Blank=None PNC=Process No Color
 HK=Hardware Kit P__=Paint



Note: 1. Hardware kits are galvanized steel.
 2. See Reference Section for available paint colors.



Transformer Bases

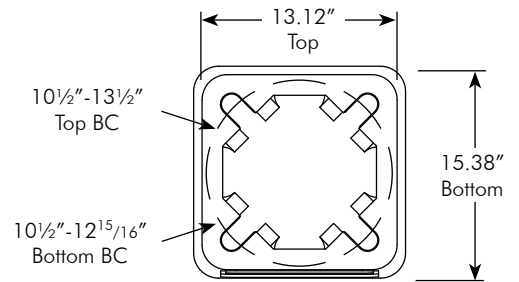
Pelco's Transformer bases stand 17" tall and comes complete with an aluminum Pelco door and 8 heavy duty galvanized steel washers. A transformer base hardware kit is optional.



Transformer Base , TB1-17 Modified, Alum w/ Pelco Door & Galvanized Washers



PB-5538 - -
 Hardware Kit Coating
 Blank=None PNC=Process No Color
 HK=Hardware Kit P__=Paint



Hardware Kit , Transformer Base 1"-8NC x 4", Set of 4, Galvanized



PB-5437-GLV

Note:
 For mounting base plates to the top of Transformer Bases.
 Includes 4 Hex Head Bolts, 8 Washers, 4 Lock Washers, and 4 Hex Nuts.

Note: 1. Hardware kits are galvanized steel.
 2. See Reference Section for available paint colors.

