

Ocean State Signal Co.

27 Thurber Blvd • Smithfield, RI 02917
(401) 231-6780 Fax: (401) 231-4390



SPECIFICATION SHEET

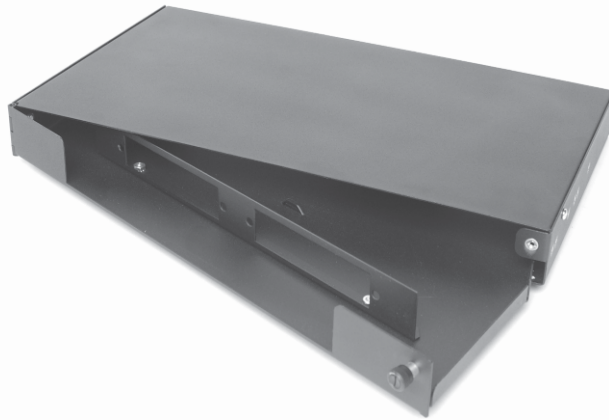
TITLE:
Fiber Distribution Enclosure

PART NO.:
10-4323

FRM-1RU-2X-SO

Fiber Distribution Unit

(FDU)



Product Description

The Multilink *FRM-1RU-2X-SO* is a 1RU 2 termination panel 19" or 23" rack mount fiber distribution unit designed to support both patching and splicing in one unit. The unit has a swing out master panel that allows for accessing terminations and splicing. Included are two universal 19" or 23" mounting supports. The unit requires an 1120-SSTA splice tray ordered separately. The *FRM-1RU-2X-SO* is one of a family of units that support fiber termination and splicing in rack mount applications.

General Specifications

Dimensions: 1.87" H x 17.0" W x 9.75" D
Capacity: (2) Multilink Termination Panels (see individual panel capacities)
Material: 16 Gauge Steel
Coatings: Electro statically applied powder coat, available in black or white

Ordering Information

<u>Part Number</u>	<u>Description</u>
10-4323	FRM-1RU-2X-SO (Black)
10-4325	FRM-1RU-2X-SO (Off White)
70902K	1120-SSTA Splice Tray

For more information, visit our website at www.oceanstatesignal.com