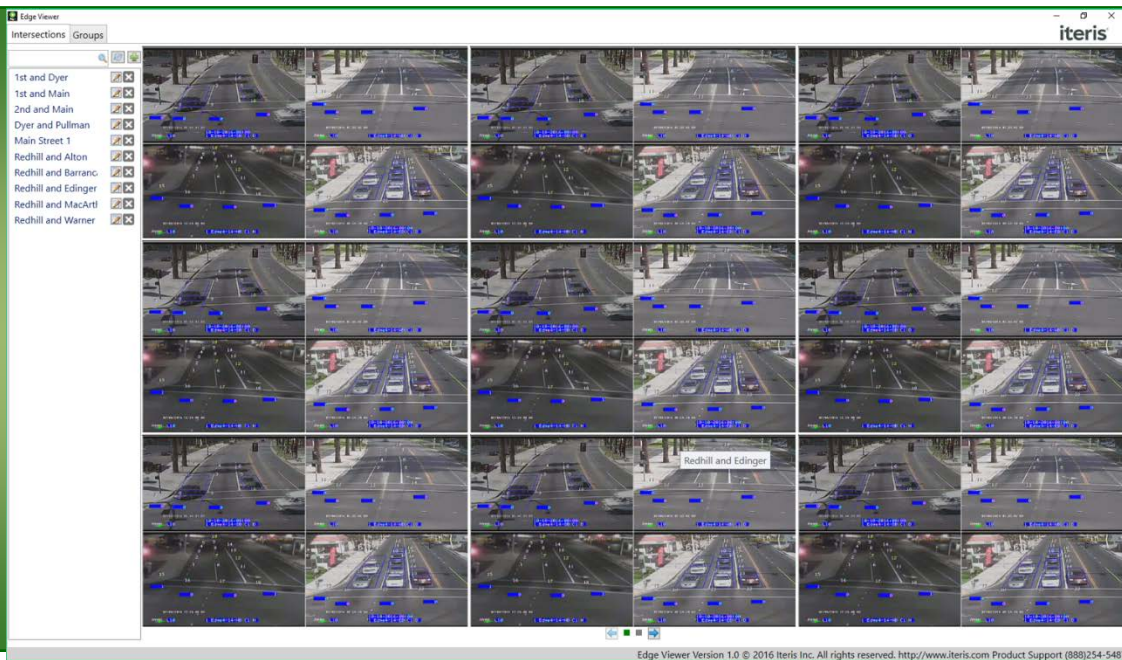


Vantage[®]

Edge Viewer



iteris[®]

1. INTRODUCTION

Edge Viewer allows for simple viewing of all EdgeConnect enabled Vantage Edge2 intersections. Users can view all intersections 9 at a time across multiple pages or setup 'Groups' of intersections to view.

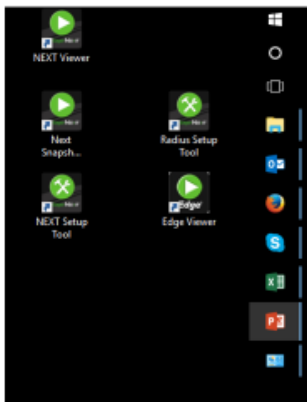
System Requirements

- Windows 7 or Windows 10 OS (32bit or 64bit)

✔ *Note:* See the [Section 3: Installation](#) for instructions on how to install this app.

2. CONFIGURATION AND OPERATION

Double Click on the Edge Viewer Icon on your desktop to start the app.



Configuring an Intersection

Refresh Page

Add Intersection

Edit Intersection

Delete Intersection

Enter Intersection Name

Enter Intersection IP Address

Add Intersection to Existing Group

Hit Save when complete or Close to Cancel

Clicking on Add or Edit Intersection opens this dialog box

iteris

Intersections | Groups

Main Street 1

Intersections

Intersection Name: Dyer and Pullman

IP Address: 198.58.64.54

Group: 55 North1

Save Close

Edge Viewer Version 1.0 © 2016 Iteris Inc. All rights reserved. <http://www.iteris.com> Product Support (888)254-5487

Configuring a Group

Refresh Page

Add Group

Enter Group Name

Edit Group

Delete Group

Select Intersection and hit the < button to remove from the Group

Select Intersection and hit the > button to add to the Group

Select Intersection and hit the \updownarrow buttons to change the order of intersections in the Group

Hit Save when complete or Close to Cancel

Clicking on Add or Edit Group opens this dialog box

Edge Viewer Version 1.1 © 2017 Iteris Inc. All rights reserved. <http://www.iteris.com> Product Support (888)254-5487

Viewing Intersections and Groups

Click on a video or the intersection name to see the video full screen

Enable low bandwidth mode for poor connection quality

Intersection name shown in top left corner of video.

Use the buttons to switch between a 2x2 and 3x3 grid

Move between pages by hitting the Left and Right arrows.

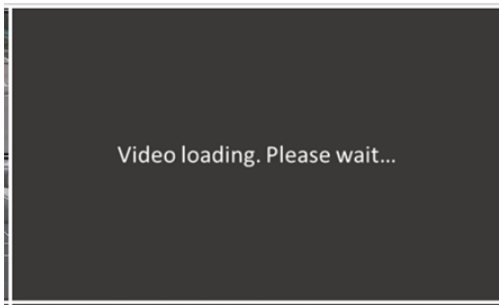
The Green Box indicates which page you are on.

Edge Viewer Version 1.1 © 2017 Iteris Inc. All rights reserved. <http://www.iteris.com> Product Support (888)254-5487

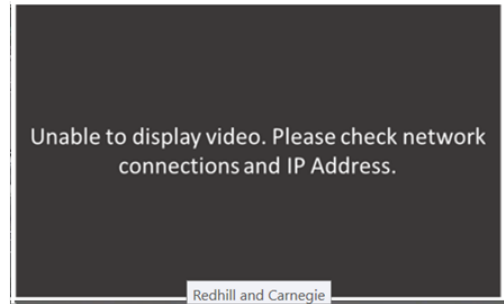
Full Screen Video



Errors and Warnings



This notice may appear while the video is loading

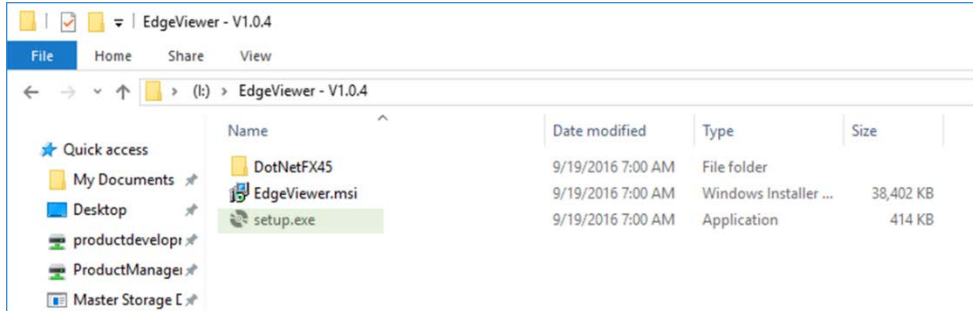


This notice may appear if the app cannot receive video from the intersection

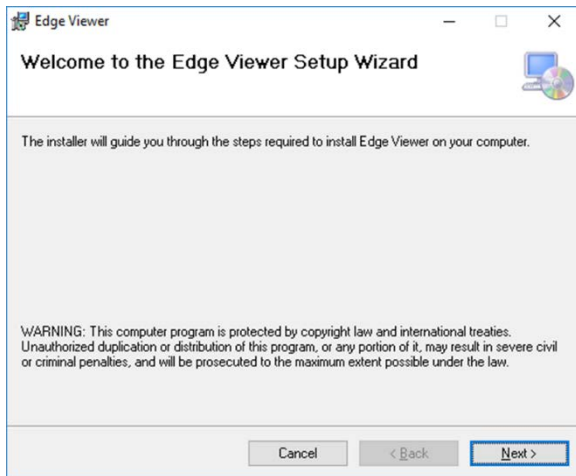
3. INSTALLATION

[After downloading the software and extracting it from the .zip file follow the instructions below.](#)

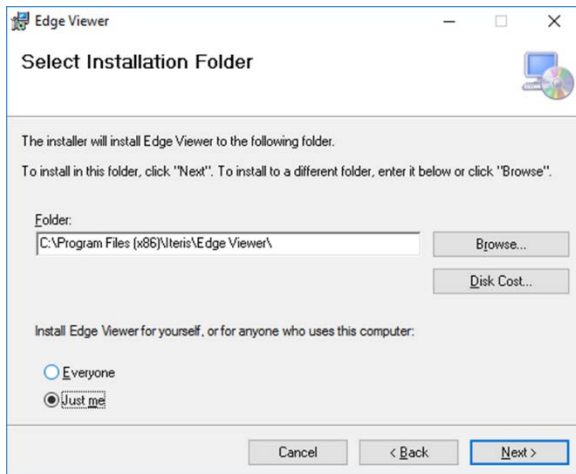
1. Double click on the 'Setup.exe' file in the installation folder.



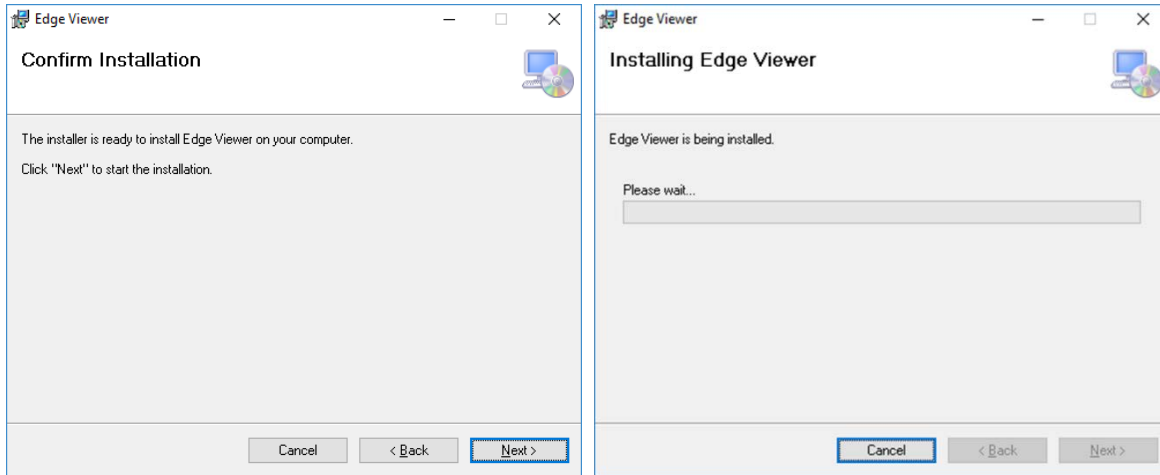
2. Click 'Next'.



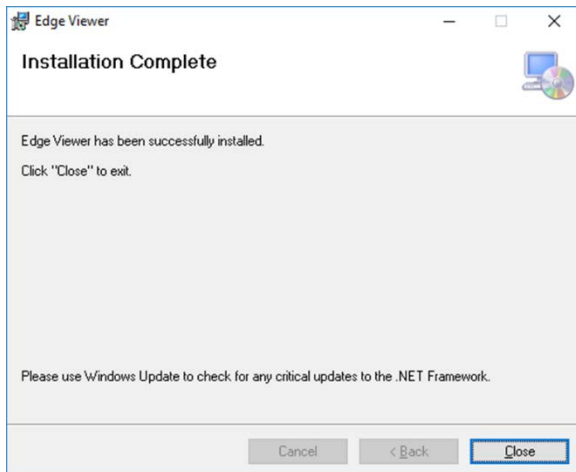
3. Select 'Just Me' and Click 'Next'.



4. Click 'Next'.




5. Click 'Close'.



4. PRODUCT SUPPORT

Product Support Team

The Iteris[®] Product Support Team consists of a group of highly skilled individuals that are knowledgeable and readily available to answer your questions or assist you with any of our Vantage products. Please do not hesitate to contact us at:

 Toll free: (888) 254-5487

For more information on Iteris, as well as the products and services that we provide, visit our website at:

 www.iteris.com

Iteris Resource Center

This site contains additional training and technical support information covering the whole range of Vantage products. Registration is easy. Visit the address below to register and begin enjoying the benefits immediately.

 www.iteris.com/support

The Resource Center app is available from the Apple App Store or the Google Play store.



© 2017 Iteris, Inc.

All rights reserved. No parts of this work may be reproduced in any form or by any means - graphic, electronic, or mechanical, including photocopying, recording, taping, or information storage and retrieval systems - without the prior written permission of Iteris, Inc.

Products that are referred to in this document may be either trademarks and/or registered trademarks of the respective owners. The publisher and the author make no claim to these trademarks.

While every precaution has been taken in the preparation of this document, the publisher and the author assume no responsibility for errors or omissions, or for damages resulting from the use of information contained in this document or from the use of programs and source code that may accompany it. In no event shall the publisher and the author be liable for any loss of profit or any other commercial damage caused or alleged to have been caused directly or indirectly by this document.

The information contained in this document is subject to change without notice.

iteris[®]

1700 Carnegie Avenue
Santa Ana, CA 92705
Phone: (949) 270-9400
Fax: (949) 270-9401